

Project

Spiritual Garden

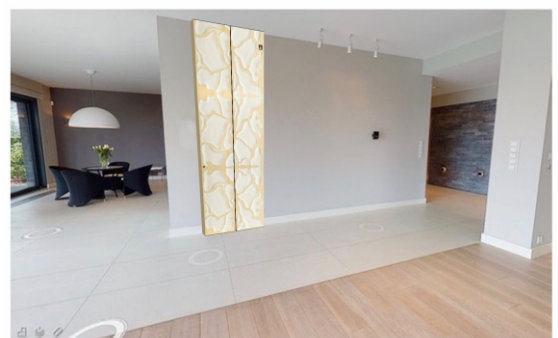
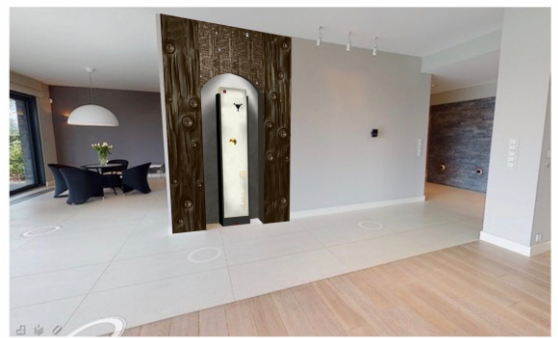
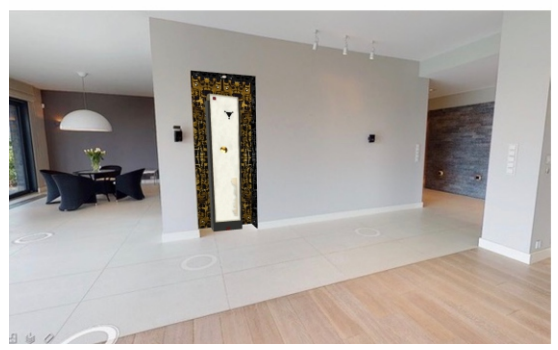
Description of technique

Design & realisation by Krzysztof Sokolowski



2021

Designs and drafts



The recess: realisation

The back wall of the recess and the central artwork are made of linden wood. The panels used for this project are made of wood from forests in the Vilnius region in Lithuania. They were seasoned naturally for 7 years, without the use of dryers or chemical substances.

The back wall of the recess as well as the central artwork are made of the best (flawless) fragments of selected linden wood. The traverses of the central work are made of ash wood.

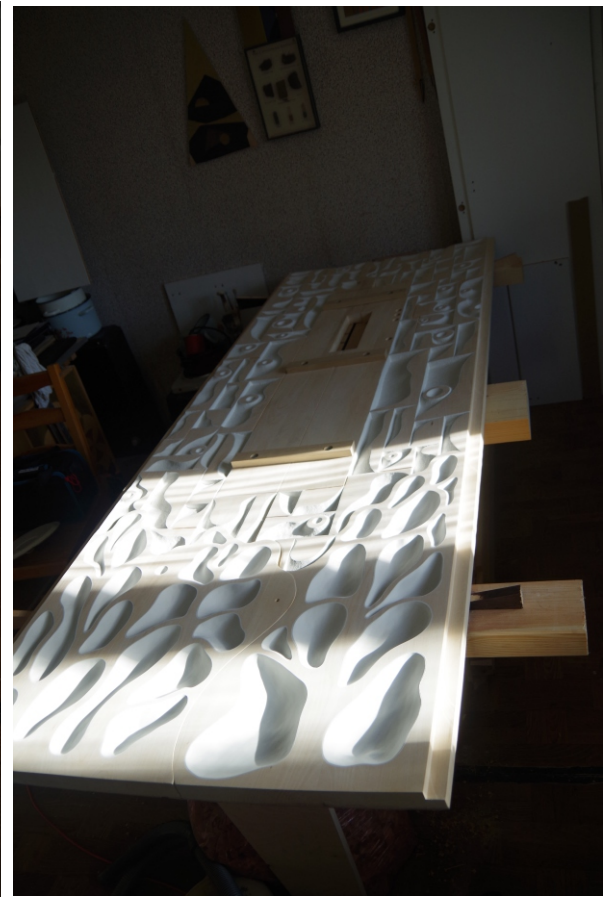
The entirety of both the back wall and the central artwork is carved by hand.



The recess: the realisation of the back wall and surfaces covered with glue gesso

The back wall and the central artwork were made in accord with the best tradition of glue gesso priming. Glue gesso was widely used in panel, icon and monumental painting. In the East, it is called levkas, in the West, it is known as Italian gesso. In the case of this project, the glue gesso was prepared by the use of Bolognese chalk and rabbit-skin glue.

Applied in layers (7 layers); sanded for gilding, moulded for French polishing parts. Under the gesso, there is a cotton fabric that acts as a reinforcement of the chalk-and-glue structure.



The realisation of impregnated, French-polished, and gilded surfaces

After sanding the glue gesso and wooden parts, the wooden fragments were soaked with Indian ink and waxed with a mixture of paraffin, plant and bee waxes.

The moulded chalk-and-glue parts were covered with shellac French polishing. Shellac is a varnish of natural origin, obtained from the secretion of insects *Kerria lacca*, which are native to Asia.

The sanded chalk-and-glue fragments were gilded with white gold leaf, also known as moon gold. The gilded elements of the central artwork are covered with $23\frac{3}{4}$ carat yellow gold leaf. All gilding was done by the use of the Instacoll System technology.



The realisation of the frame moulding of the recess composition and intarsias of other wooden elements of the entire *Spiritual Garden*

Frame moulding as well as other wooden elements of the composition were made of linden and alder wood. The wood for this part was prepared by specialists from the Faculty of Wood Technology of the Warsaw University of Life Sciences.

The intarsias were made of walnut veneer and waxed with a mixture of paraffin, plant and bee waxes.



The central artwork

The description of making wooden painting supports for this kind of art objects is given at:

<https://cognitestructura.com/wp-content/uploads/2023/03/process.pdf>

In this case, additional intarsias were made on the back of the artwork, by the use of walnut veneer.





The realisation of the main artwork of the second part of the *Spiritual Garden*

The artwork was created on a linden painting support custom-made at the Faculty of Wood Technology of the Warsaw University of Life Sciences. The traverses were made of beech wood.

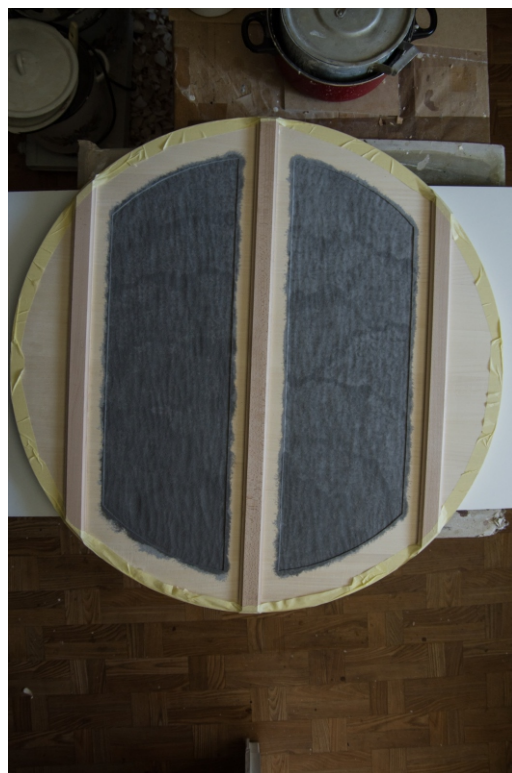
Both sides of the panel were carved and treated with rabbit skin glue.



The realisation of the main artwork of the second part of the *Spiritual Garden*

The main artwork was covered on both sides with a glue gesso made of Bolognese chalk and rabbit skin glue. The ground is reinforced with a cotton canvas on rabbit skin glue. The back side is covered with tinted glue gesso.

The primed surfaces were sanded before applying the polychrome.



The realisation of the main artwork of the second part of the *Spiritual Garden*

The front of the painting was hand-drawn, polychromed with Indian ink, and then covered with matt damar varnish with an admixture of wax. The central oculus is painted with watercolour.

On the reverse, the compositions were painted with ink and egg tempera with a mixture of red pigments: iron, earth and cadmium reds.



The realisation of the wall polychrome and bonding of all elements in the united composition

The wall polychrome was made with Italian artistic acrylic paint MAIMERI by the use of the glazing technique. To paint this polychrome, 7 layers of glazes were needed and, in the case of some compositional elements, painting in alla prima technique.

The droplet elements of the composition are made of linden wood, covered with glue gesso, sanded and gilded with white gold leaf by the use of the Instacoll System technique.

Illumination of the recess is realised laterally by the use of LED lightstrips, and the compositional extension of the recess is achieved through side-mounted mirrors.

